

Wisconsin Automated Fingerprint Identification System

Guidelines for Capturing Acceptable Fingerprints



For more information or training contact the Madison Crime Laboratory : 608-266-2031.

Good, clear impressions of the ridge patterns are essential for identification.



Acceptable
Fingerprint



Print Too Light

Apply more pressure
OR ink.



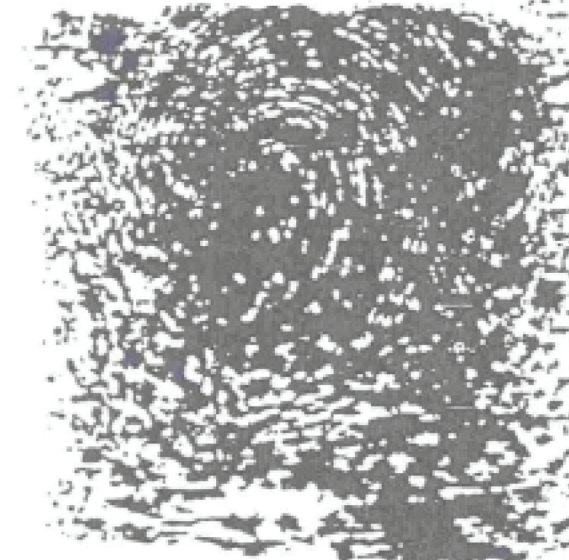
Partial Print

Take straight-down
from first joint to tip.



Print Too Dark

Apply less pressure OR
ink.



Excess Perspiration

Dry OR wipe finger
with alcohol, ink and
print one finger at a
time.



**Ink Unevenly
Distributed**

Ensure ink and pres-
sure is evenly distribut-
ed.



**Excessively Dry
(Worn Ridges)**

Soak fingers and air
dry OR moisturize with
oils/lotion.

- Fingerprint clean hands only
- Dry hands thoroughly
- Take impressions in correct fingerprint boxes
- Produce clear impressions - Do not slip or smudge
- If unable to print - note why in finger block
- Center impression in finger block
- Live Scan - Clean glass between each rolling

Fingerprints that are not acceptable in quality will be rejected and require recollection.