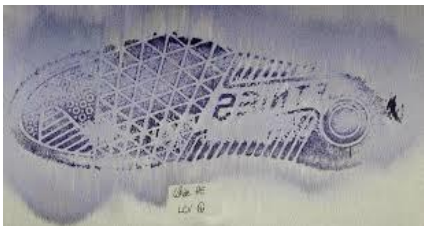


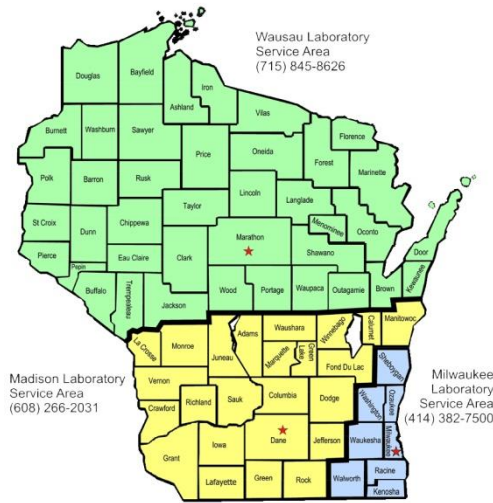


Chemical processing techniques can develop latent prints & footwear impressions that were previously not visible to the naked eye. Just because you can't see it doesn't mean there isn't something there.

The Latent Prints and Footwear Unit examines items of evidence using a variety of physical and chemical methods to enhance and visualize both latent prints and footwear impressions.



## Wisconsin State Crime Laboratories



**Madison Laboratory**  
4626 University Ave.  
Madison, WI 53705  
Phone: 608.266.2031

**Milwaukee Laboratory**  
1578 South 11th St.  
Milwaukee, WI 53204  
Phone: 414.382.7500

**Wausau Laboratory**  
7100 Stewart Ave.  
Wausau, WI 54401  
Phone: 715.845.8626

For more information, please visit

<https://www.doj.state.wi.us/dles/wscl/wisconsin-state-crime-laboratory-bureau>

<https://www.doj.state.wi.us/>

## Wisconsin State Crime Laboratories



### Latent Print & Footwear Unit



---

## Evidence Packaging

---

- Drugs must be separated from the packaging submitted for latent print processing & submitted as separate items.
- An item is comprised of one piece of evidence, with the exception of latent lifts & images.
- Fasten down large or potentially dangerous items with string or wire to prevent shifting & contact with the interior of the packaging.
- When packaging evidence, do not tightly wrap non-porous items as this may damage or destroy any latent prints.
- Air dry any wet or damp item before packaging it in paper.
- Clearly describe items on the Transmittal.



**Proper packaging is essential to getting the most out of your evidence.**

✓ All images of latent prints & footwear impressions submitted to the laboratory should contain a visible scale on the same plane as the impression.

✓ Latent impressions submitted to the lab should be photographed in a lossless format (i.e. TIFF or RAW).

✓ Digital evidence images will not be accepted via e-mail.



---

## What do we do?

---

- Questioned latent prints can be compared with known standards in order to attempt to identify or exclude the individual as having deposited an impression. Additionally, unidentified latent prints can be searched in the Wisconsin Automated Fingerprint Identification System (AFIS) and FBI Next Generation Identification (NGI) to attempt to identify the source of the impression.
- Questioned footwear impressions can be compared to submitted known footwear standards to establish identity, exclusions, or associations.

*Note: Evidence Processing can damage any item; please contact the lab to discuss options for electronics or items of value.*

---

## Evidence Submission Guidelines **\*New\***

---

### Homicides

- First submission: Limited to ten (10) items; each subsequent submission is limited to ten (10) items.

### Armed Robberies/Assaults/Violent Crimes

- First submission: Limited to seven (7) items; each subsequent submission is limited to seven (7) items.

### Burglaries/Property Crimes/Possession cases

- First submission: Limited to five (5) items; each subsequent submission is limited to five (5) items.

*Note: The Crime Laboratory is committed to offering our submitters quality service. If you have a case that requires analysis outside the guidelines, please contact a Criminalistics Supervisor or the Laboratory Director.*

---

## Other Tidbits

- Latent lifts, images, and known standards have no submission limit.
- Smaller items which can be removed from the crime scene should be collected and submitted to the lab for full sequential processing. Evidence processing prior to submission may limit the analyses that can be conducted on an item.
- Please contact the lab if evidence analysis is no longer needed.